

CERTIFIED LAND CORNER RECORDATION

DESCRIPTION OF CORNER EVIDENCE FOUND, AND ORIGINAL RECORD (if known)

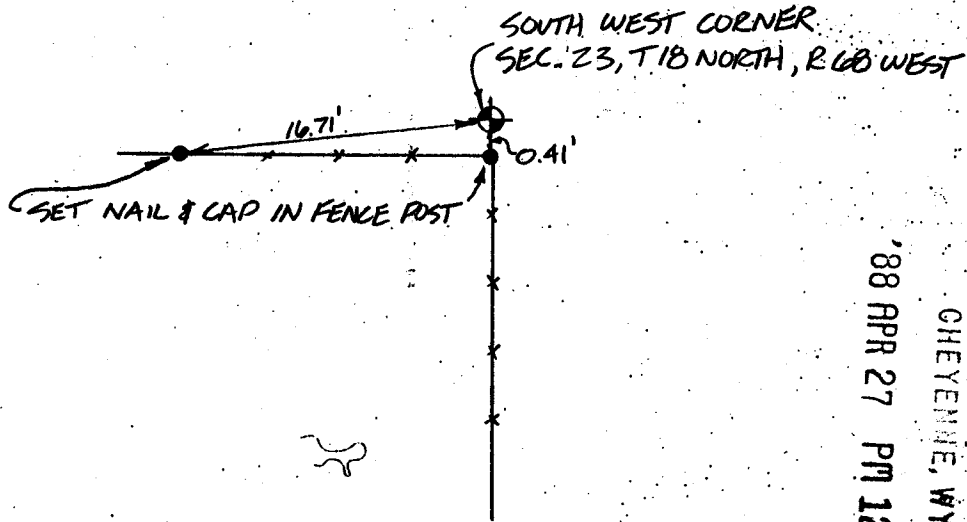
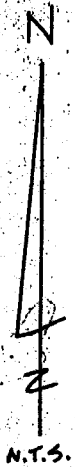
FOUND 1/2" REBAR

ORIGINAL RECORD CAUS FOR 16" x 14" x 6" GRANITE STONE

DESCRIPTION OF MONUMENT AND ACCESSORIES ESTABLISHED TO PERPETUATE THE ORIGINAL LOCATION OF THIS CORNER:

FOUND 1/2" REBAR - SET NAIL & CAP IN FENCE POSTS AS REFERENCE MONUMENT

SKETCH, WITH COURSE AND DISTANCE TO ADJACENT CORNER IF DETERMINED IN THIS SURVEY. (May Sketch or Paste Reproduction on Reverse Side.)



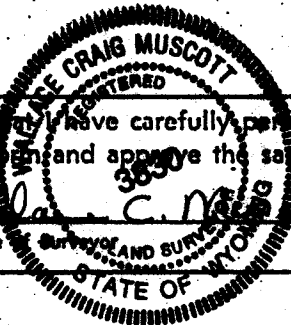
'88 APR 27 PM 12 24

RECEIVED  
LARAMIE COUNTY  
CHEYENNE, WY.

043106

I, WALLACE G. MUSCOTT certify that I have carefully performed or reviewed the work done on the diagrammed corner as reported on this recordation and approve the same.

Signature



Registration No.

STATE OF WYOMING,  
Office of Clerk and Recorder,  
County of \_\_\_\_\_

This "corner record" was filed for record on the \_\_\_\_\_ day of \_\_\_\_\_, 19\_\_\_\_, was noted on the cross-index plat and is assigned page No. \_\_\_\_\_, in book No. \_\_\_\_\_

Joseph C. Whiteland  
County Official

Cross Index No.	R-17	T.	18N	R.	68W	Mer. 6 <sup>th</sup>
		T.		R.		Mer.
		T.		R.		Mer.
		T.		R.		Mer.
		T.		R.		Mer.
		T.		R.		Mer.
		T.		R.		Mer.